

Genome-wide associations for fertility using data from experimental herds in four countries

D.P. Berry,

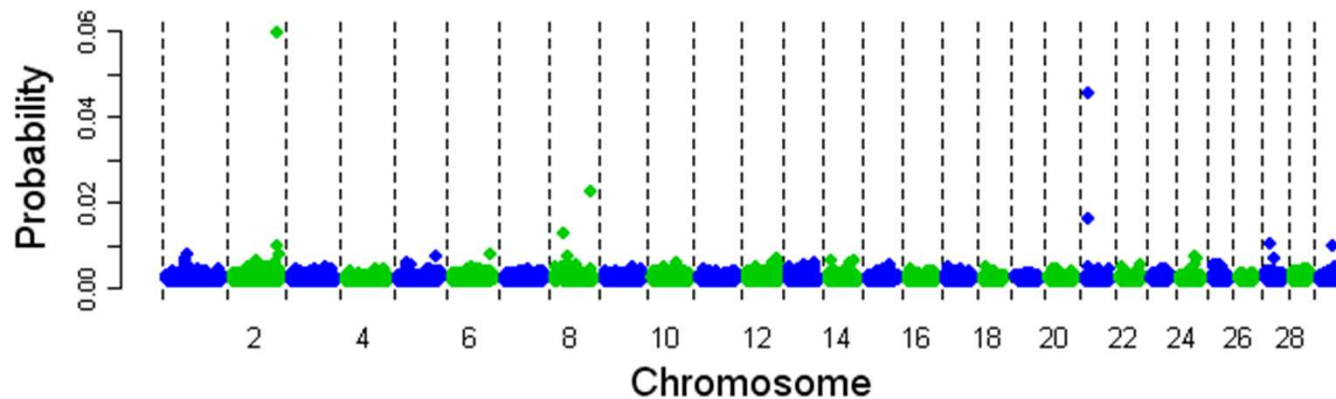
J.W.M. Bastiaansen, R.F. Veerkamp,

S. Wijga, E. Wall, E. Strandberg, & M.P.L. Calus

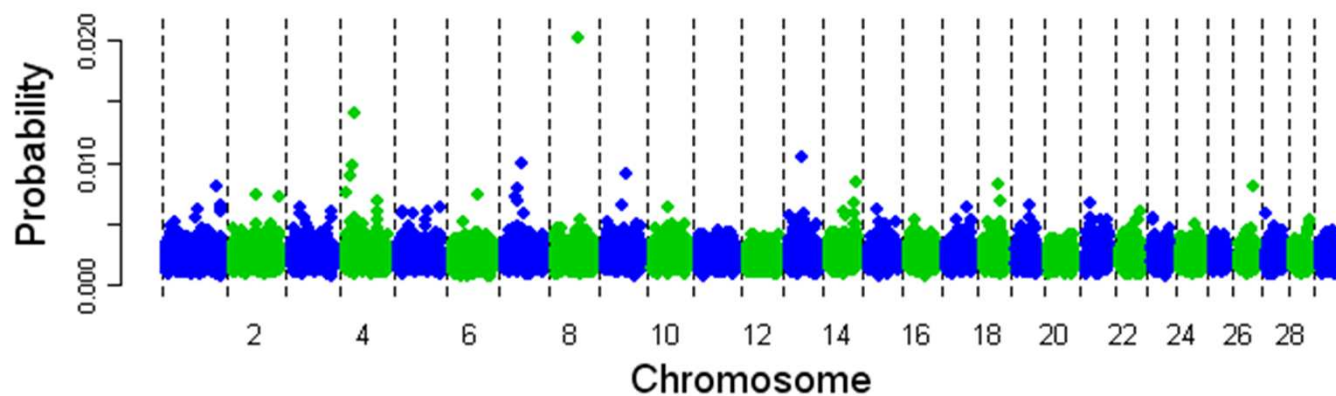
Materials and Methods

- Fertility traits
 - Calving to first heat/service interval, calving interval, pregnancy to first service, no of service & post-partum commencement of luteal activity
- 37,590 genetic markers on 1,570 cows
- Bayesian stochastic search variable selection

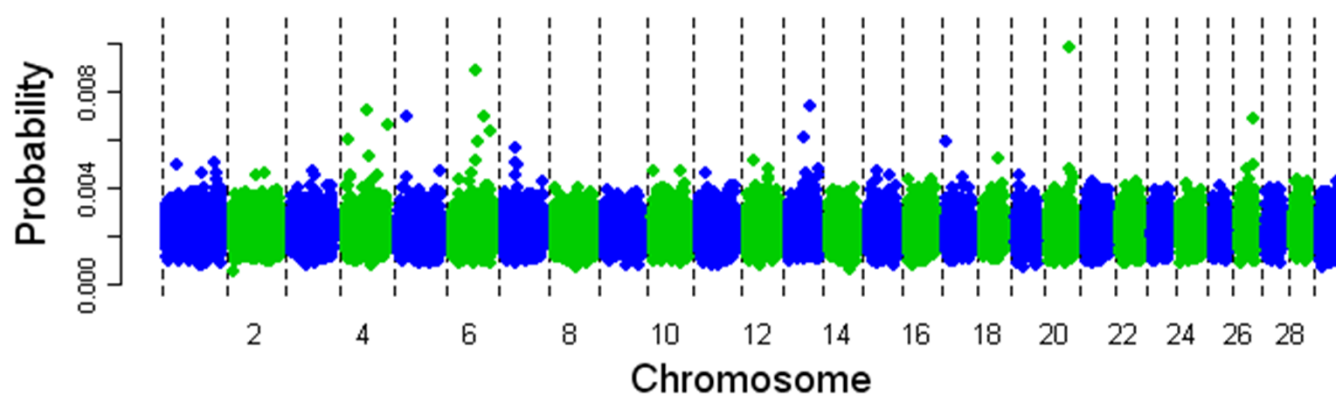
Commencement of luteal activity

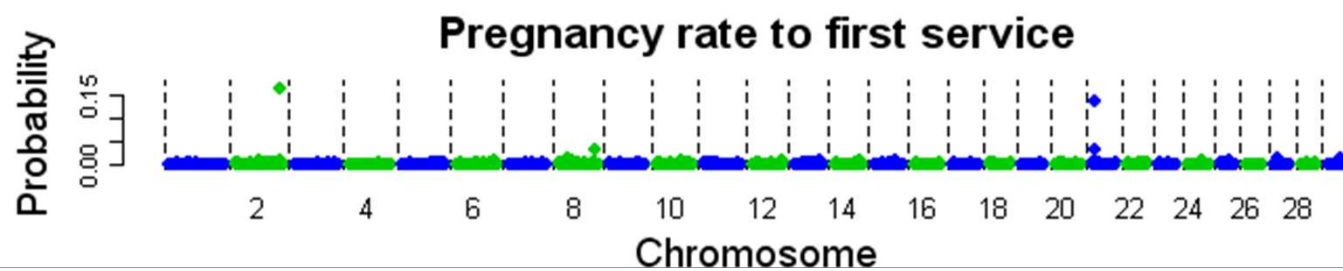
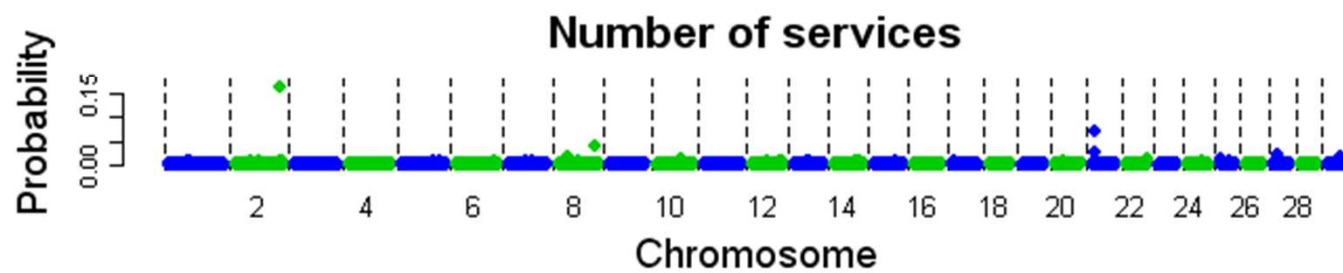
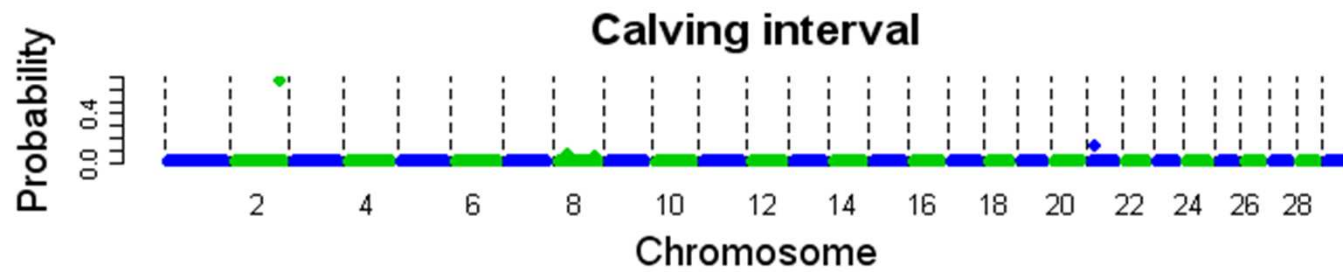
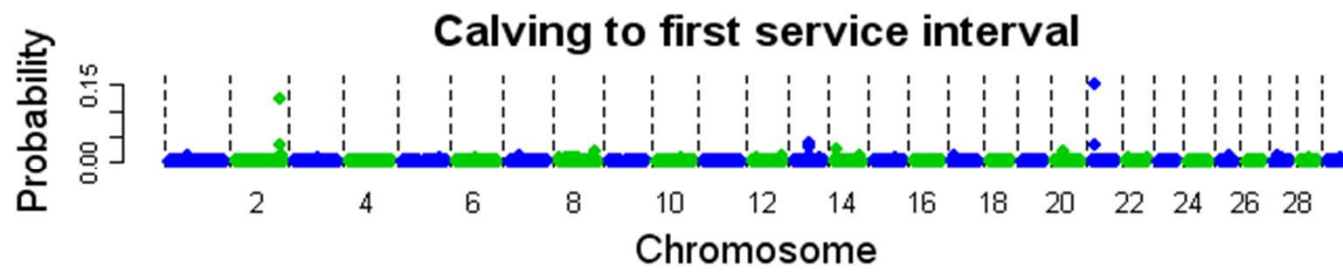
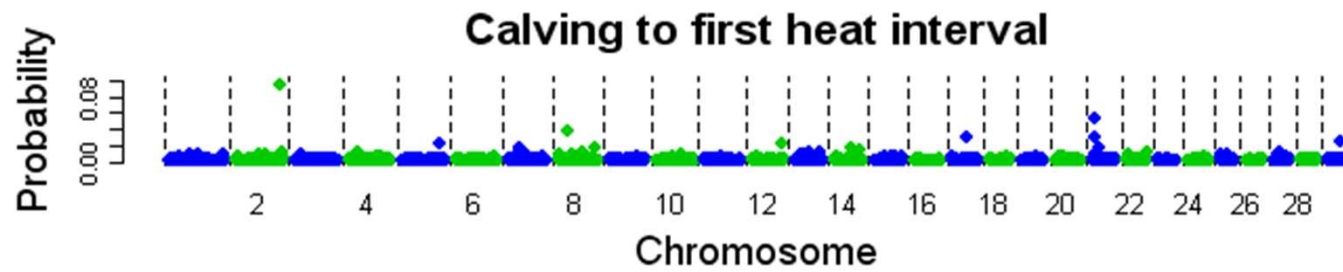


Calving to first heat interval



Calving to first service interval







This work was carried out as part of the RobustMilk project that is financially supported by the European Commission under the Seventh Research Framework Programme, Grant Agreement KBBE-211708

www.robustmilk.eu